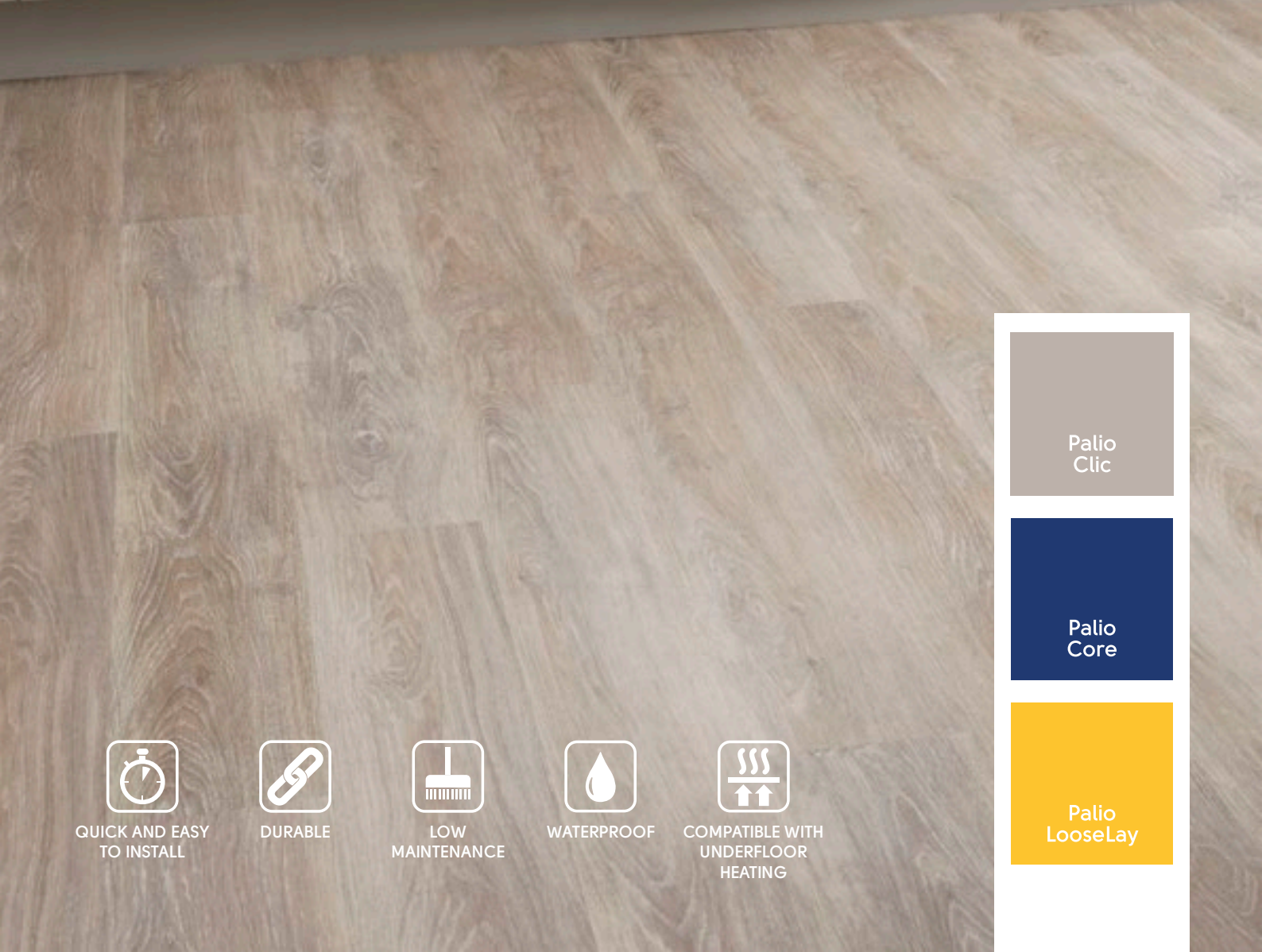




3 LUXURY FLOORING RANGES

**DESIGNED  
FOR THE TRADE  
TO FIT**



QUICK AND EASY  
TO INSTALL



DURABLE



LOW  
MAINTENANCE



WATERPROOF



COMPATIBLE WITH  
UNDERFLOOR  
HEATING



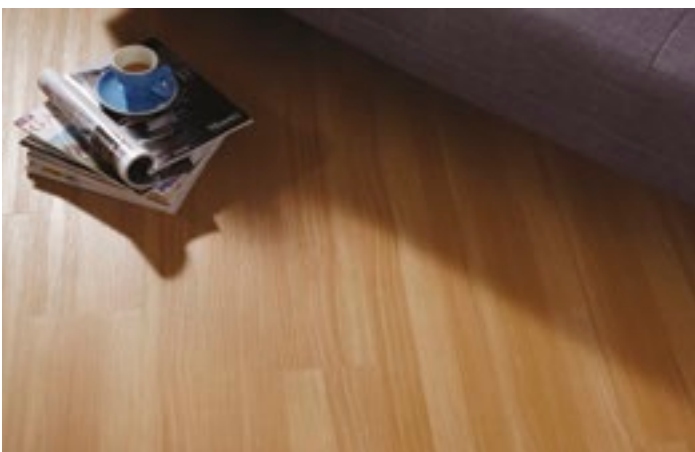
Palio  
Clic



Palio  
Core



Palio  
LooseLay





# CONTENTS

WHAT IS PALIO BY KARNDDEAN? .....	4
RANGE OVERVIEW .....	5
OUR PRODUCTS	
PALIO CLIC   PALIO CORE .....	6
PALIO LOOSELAY .....	16
TECHNICAL INFORMATION	
PALIO CLIC   PALIO CORE .....	15
PALIO LOOSELAY .....	25
INSTALLATION GUIDELINES	
PALIO CLIC   PALIO CORE .....	14
PALIO LOOSELAY .....	24
SUPPORT AND WHERE TO BUY .....	26

# WHAT IS PALIO BY KARNDEAN?

Palio by Karndean is luxury vinyl flooring available in three product ranges, Palio Clic, Palio Core and Palio LooseLay, offering quick and easy installation without the need for a specialist fitter.



## QUICK AND EASY TO INSTALL

Using our loose lay and patented click-locking mechanism.



## WATERPROOF

Won't swell, crack or warp when wet.



## HIGHLY REALISTIC DESIGNS

Designed by Karndean's in-house product team to perfectly replicate real wood and stone.



## SOFT, WARM AND QUIET UNDERFOOT

No cold tiles, no clicking shoes.



## DURABLE

Won't warp or crack like real wood and stone. Lifetime guarantee.



## HYGIENIC

Unlike carpets, our floors don't hold dust, dirt, pollen or other allergens.



## LOW MAINTENANCE

Clean easily with a sweep and mop. No sanding, varnishing or staining.



## COMPATIBLE WITH UNDERFLOOR HEATING

Up to 27°C.

## What makes our floors different?

Palio by Karndean is luxury vinyl flooring. It's not like typical vinyl. It doesn't come in rolls or sheets, and it doesn't need to be glued down.

Instead, it comes in robust, pre-cut planks and tiles. Our highly realistic designs look just like the wood and stone materials they're inspired by.

But unlike a wood or stone floor Palio flooring is easy to install. All you need to do is simply click or lay it in place.



MONTIERI CP4504 | RCP6504



# RANGE OVERVIEW

---



Palio  
Clic

The Palio Clic range is quick and easy to install with a patented and familiar click-locking mechanism, and doesn't require adhesive.



**PATENTED CLICK-LOCKING SYSTEM**



**NO NEED FOR ADHESIVE**



Palio  
Core

Available in the same realistic wood and stone look designs as Palio Clic, Palio Core offers a rigid core LVT construction which provides more robustness on uneven subfloors and is our most acoustically friendly Palio product.



**PATENTED CLICK-LOCKING SYSTEM**



**NO NEED FOR ADHESIVE**



**INSTALLS OVER MOST EXISTING HARD FLOORS**



**REDUCES IMPACT NOISE TRANSFER BY 19dB**



**NO UNDERLAY REQUIRED**



Palio  
LooseLay

Realistic wood and stone look designs, available in a loose lay format with a friction grip backing. If a plank or tile gets damaged, you can easily replace it without taking the whole floor up.



**FRICTION GRIP BACKING**



**REDUCES IMPACT NOISE TRANSFER BY 13dB**



**CAN BE LAID IN ROOMS WITH 95% RELATIVE HUMIDITY**



**EASY TO REPLACE**



**NO EXPANSION GAP**






## PALIO CLIC

Palio Clic comes in a range of highly realistic wood and stone designs. It uses our patented click-locking system, so you can simply click the pre-cut planks and tiles into place. You won't even need adhesive.

## PALIO CORE

Palio Core comes in the same range of designs as Palio Clic, but it combines our simple click-locking system with a rigid core construction which provides more robustness on uneven floors. And with its acoustic foam backing, it can reduce noise transfer by 19dB.

### Palio Clic and Palio Core comparison

Feature	Palio Clic	Palio Core
 Patented click-locking system	✓	✓
 No need for adhesive	✓	✓
 Installs over most existing hard floors		✓
 Reduces impact noise transfer by 19dB		✓
 No underlay required*		✓



## WOOD AT A GLANCE

1220mm x 179mm (48" x 7")



SORANO

Palio Clic **CP4508**

Palio Core **RCP6508**



CRESPINA

Palio Clic **CP4505**

Palio Core **RCP6505**



AREZZO

Palio Clic **CP4503**

Palio Core **RCP6503**



VETRALLA

Palio Clic **CP4506**

Palio Core **RCP6506**



MONTIERI

Palio Clic **CP4504**

Palio Core **RCP6504**



ASCIANO

Palio Clic **CP4502**

Palio Core **RCP6502**



BOLSENA

Palio Clic **CP4507**

Palio Core **RCP6507**



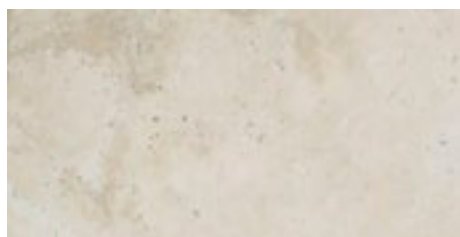
LUCCA

Palio Clic **CP4509**

Palio Core **RCP6509**

## STONE AT A GLANCE

307mm x 600mm (12" x 23.6")



MURLO

Palio Clic **CT4302**

Palio Core **RCT6302**



VOLTERRA

Palio Clic **CT4301**

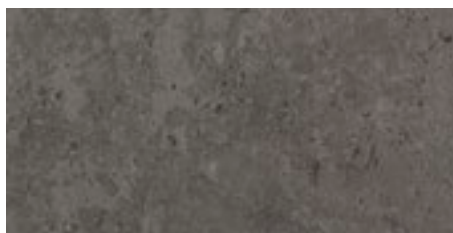
Palio Core **RCT6301**



PIENZA

Palio Clic **CT4303**

Palio Core **RCT6303**



CETONA

Palio Clic **CT4304**

Palio Core **RCT6304**



MURLO CT4302 | RCT6302

\*An underlayment is not required when installing Palio Clic but can be used if additional sound insulation is required. If underlay is used, it must be less than 2mm thick.









SORANO  
Palio Clic **CP4508** | Palio Core **RCP6508**  
1220mm x 179mm (48" x 7")



AREZZO  
Palio Clic **CP4503** | Palio Core **RCP6503**  
1220mm x 179mm (48" x 7")



MONTIERI  
Palio Clic **CP4504** | Palio Core **RCP6504**  
1220mm x 179mm (48" x 7")



BOLSENA  
Palio Clic **CP4507** | Palio Core **RCP6507**  
1220mm x 179mm (48" x 7")



MONTIERI **CP4504** | **RCP6504**



AREZZO **CP4503** | **RCP6503**







CRESPINA  
 Palio Clic **CP4505** | Palio Core **RCP6505**  
 1220mm x 179mm (48" x 7")



VETRALLA  
 Palio Clic **CP4506** | Palio Core **RCP6506**  
 1220mm x 179mm (48" x 7")



ASCIANO  
 Palio Clic **CP4502** | Palio Core **RCP6502**  
 1220mm x 179mm (48" x 7")



LUCCA  
 Palio Clic **CP4509** | Palio Core **RCP6509**  
 1220mm x 179mm (48" x 7")



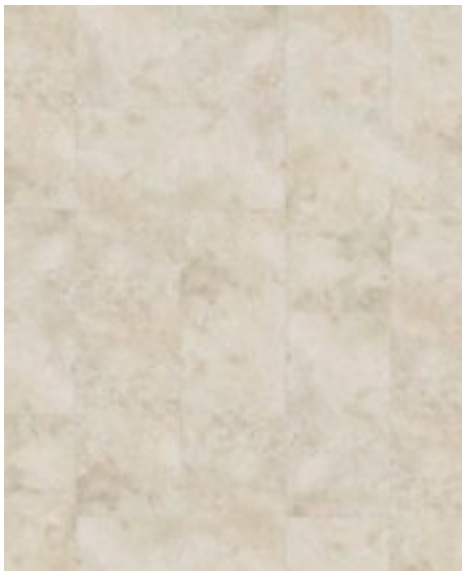
CRESPINA **CP4505** | **RCP6505**



LUCCA **CP4509** | **RCP6509**







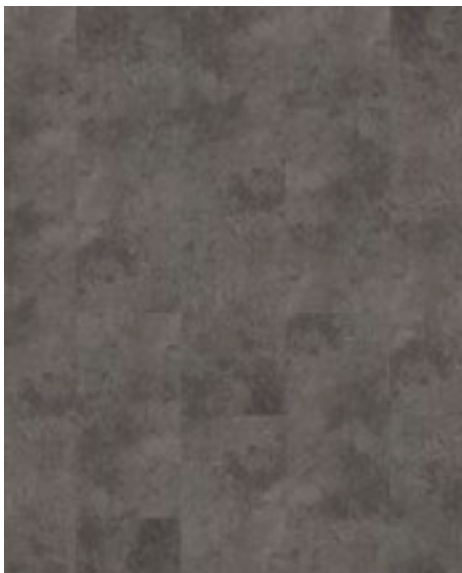
**MURLO**  
 Palio Clic **CT4302** | Palio Core **RCT6302**  
 307mm x 600mm (12" x 23.6")



**PIENZA**  
 Palio Clic **CT4303** | Palio Core **RCT6303**  
 307mm x 600mm (12" x 23.6")



**VOLTERRA**  
 Palio Clic **CT4301** | Palio Core **RCT6301**  
 307mm x 600mm (12" x 23.6")



**CETONA**  
 Palio Clic **CT4304** | Palio Core **RCT6304**  
 307mm x 600mm (12" x 23.6")



MURLO CT4302 | RCT6302



CETONA CT4304 | RCT6304

# PALIO CLIC | PALIO CORE Installation guidelines

Please refer to [palioflooring.com](https://palioflooring.com) for the full installation instructions.



1. Using a knife and a straight edge measure the first plank to no smaller than the width of the plank.



2. Score the plank once and snap it so you have the desired length.



3. No need for adhesive, click and lock the planks into place.



4. Continue to fit the rest of the floor. Remember to leave a 5mm expansion gap.



Palio  
Clic

Palio  
Clic

Palio  
Core

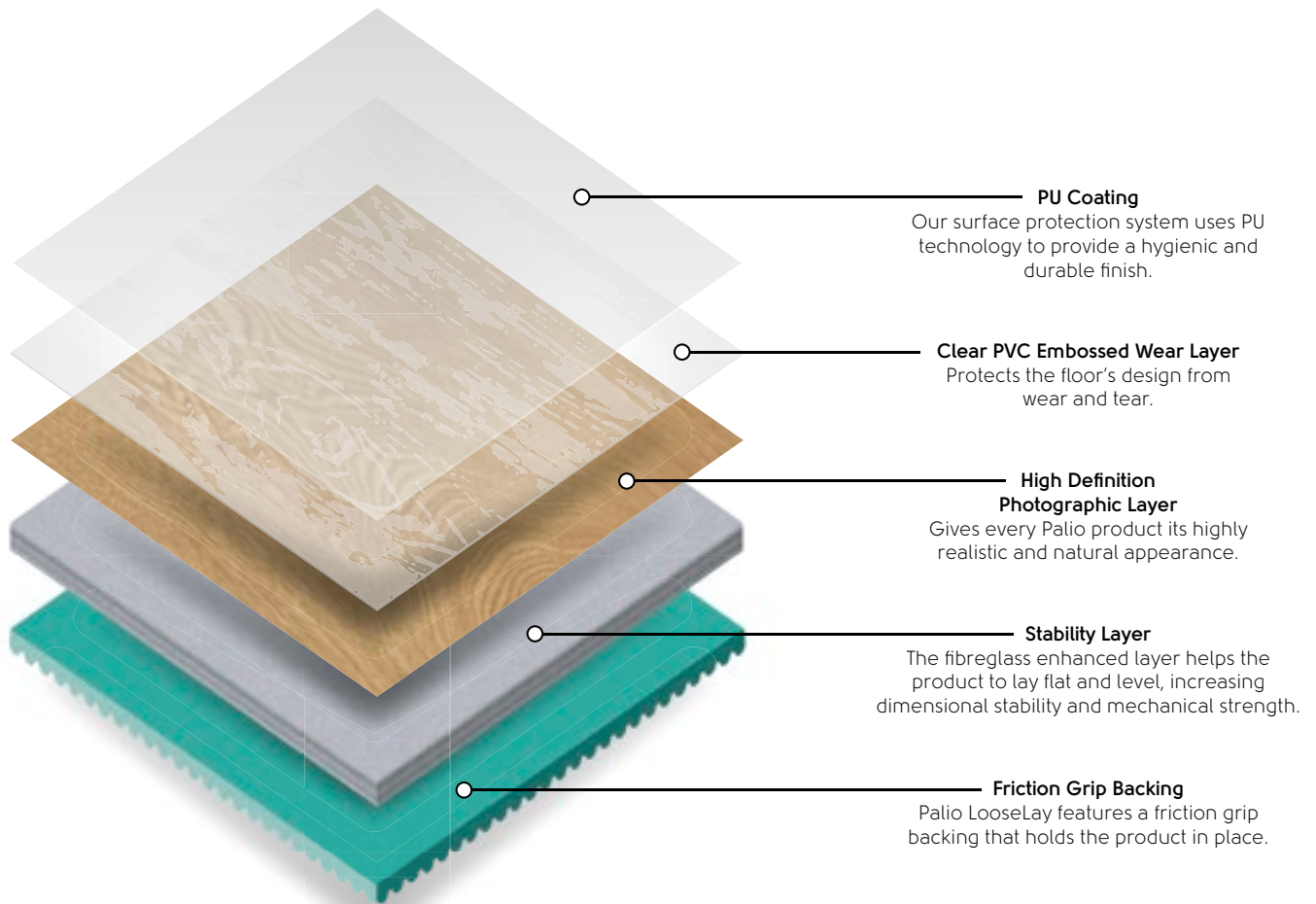
## Palio Core

# PALIO CORE

\*\*\*Slip resistance is measured on ex-factory product. Slip resistance in use will be affected by surface contamination, use and by how the product is maintained.

# PALIO LOOSELAY

Palio LooseLay comes in 14 different wood and stone designs. With its friction grip backing, it's easy to fit. It creates a strong bond with the subfloor using a calculated combination of weight and friction. And it's easy to repair. If a plank or tile gets damaged, you can quickly replace it without taking the whole floor up.



LEVANZO LLP150



## WOOD AT A GLANCE

1050mm x 250mm (41.3" x 9.85")



PALMARIA

LLP149



LAMPIONE

LLP147



TAVOLARA

LLP144



BUDELLI

LLP146



SICILIA

LLP142



LINOSA

LLP148



TORCELLO

LLP145



LEVANZO

LLP150



SARDINIA

LLP143

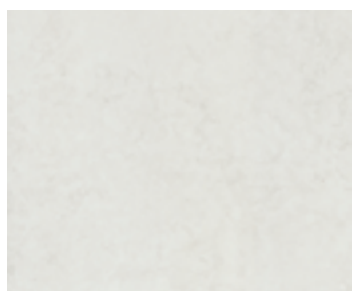


VIVARA

LLP151

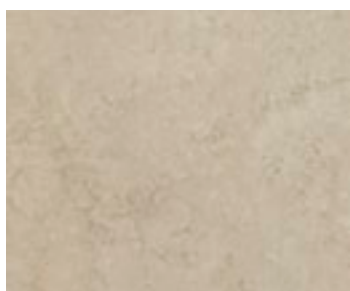
## STONE AT A GLANCE

500mm x 610mm (19.7" x 24")



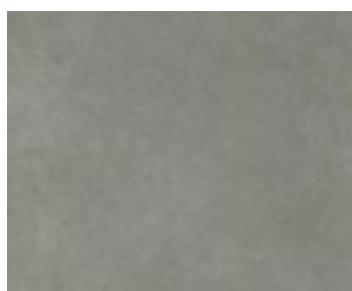
TINO

LLT208



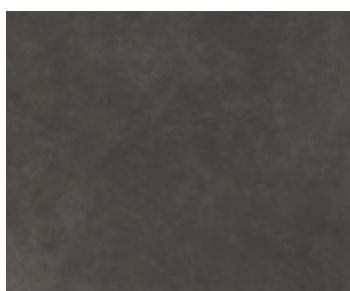
CAPRI

LLT209



NISIDA

LLT210



VULCANO

LLT211



PALMARIA LLP149







TAVOLARA

LLP144

1050mm x 250mm (41.3" x 9.85")



BUDELLI

LLP146

1050mm x 250mm (41.3" x 9.85")



TORCELLO

LLP145

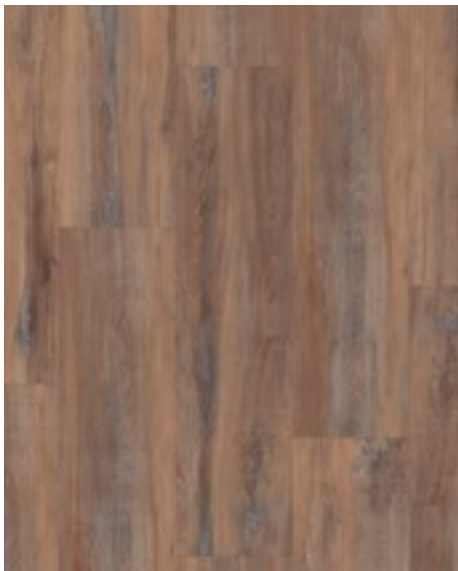
1050mm x 250mm (41.3" x 9.85")



SICILIA

LLP142

1050mm x 250mm (41.3" x 9.85")



SARDINIA

LLP143

1050mm x 250mm (41.3" x 9.85")



SICILIA LLP142







PALMARIA  
LLP149  
1050mm x 250mm (41.3" x 9.85")



LAMPIONE  
LLP147  
1050mm x 250mm (41.3" x 9.85")



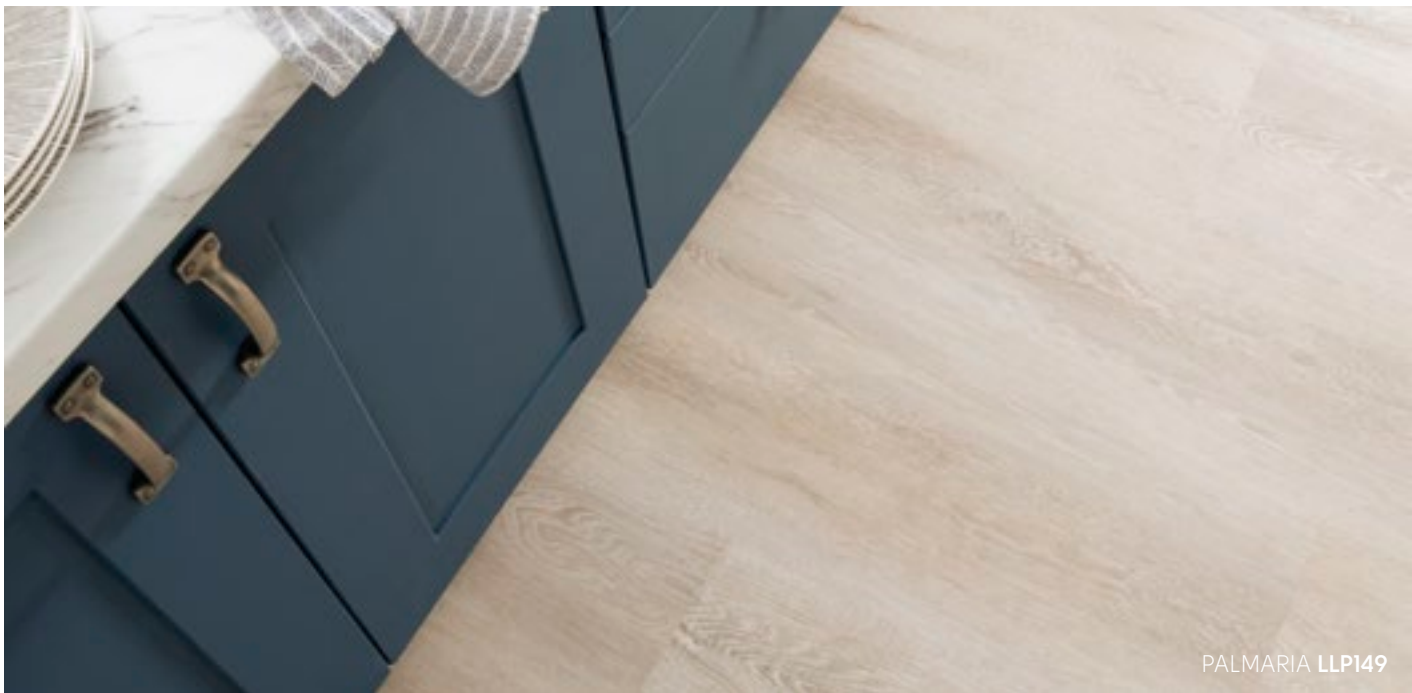
LEVANZO  
LLP150  
1050mm x 250mm (41.3" x 9.85")



LINOSA  
LLP148  
1050mm x 250mm (41.3" x 9.85")



VIVARA  
LLP151  
1050mm x 250mm (41.3" x 9.85")



PALMARIA LLP149







TINO  
LLT208  
500mm x 610mm (19.7" x 24")



CAPRI  
LLT209  
500mm x 610mm (19.7" x 24")



NISIDA  
LLT210  
500mm x 610mm (19.7" x 24")



VULCANO  
LLT211  
500mm x 610mm (19.7" x 24")



NISIDA LLT210



NISIDA LLT210

# PALIO LOOSELAY Installation guidelines

Please refer to [palioflooring.com](https://palioflooring.com) for the full installation instructions.



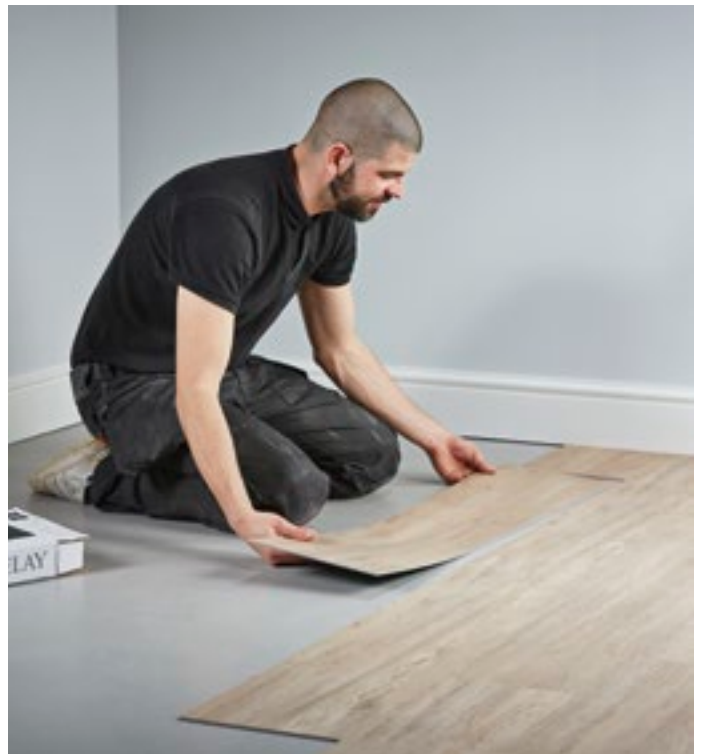
1. Using a knife and a straight edge measure the first plank to no smaller than the width of the plank.



2. Score the plank once and snap it so you have the desired length. You may need to use a knife to fully separate the plank.



3. Using a knife, chamfer the edge to get a symmetrical sloping edge so the plank fits tightly against the wall or another plank.














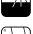













4. Lay the planks loose, the friction grip backing will hold the product to the floor. A tackifier around the edge of the room is recommended.



# PALIO LOOSELAY Technical specification

Palio  
LooseLay

## PALIO LOOSELAY

	STANDARD	RESULT	BOX QUANTITY	M <sup>2</sup>
	SIZE	EN ISO 24342	12 Planks	3.150
		Plank: 1050 x 250 mm (41.3" x 9.85") Tile: 500 x 610 mm (19.7" x 24")	10 Tiles	3.050
	THICKNESS	EN ISO 24346		
		4.5 mm		
	WEAR LAYER	EN ISO 24340		
		0.55 mm		
	SURFACE TREATMENT	PU coating		
	GUARANTEE	Light industrial Commercial Domestic		
		15 years* 15 years* Lifetime guarantee*		
	BEVELLED EDGE	No		
	MASS	EN ISO 23997		
		7470 g/m <sup>2</sup>		
	STANDARDS	EN 649/EN ISO 10582		
		Pass		
	CLASSIFICATION	EN 685/EN ISO 10874- Light industrial		
		42: Light industrial general		
		EN 685/EN ISO 10874- Commercial		
		33: Commercial heavy		
		EN 685/EN ISO 10874- Domestic		
		23: Domestic heavy		
	REACTION TO FIRE	EN 13501-1		
		B <sub>f1</sub> -s1		
	STAINING RESISTANCE	EN ISO 26987/EN 423		
		Excellent		
	LIGHT FASTNESS	EN ISO 105-B02		
		7		
	ABRASION RESISTANCE	EN 649 EN ISO 10582		
		Group T Type 1		
	FLEXIBILITY	EN ISO 24344		
		Pass		
	DIMENSIONAL STABILITY	EN 434/EN ISO 23999		
		≤0.10%		
	ACOUSTIC IMPACT NOISE REDUCTION	EN ISO 717-2/EN ISO 140-8		
		ΔL <sub>w</sub> = 13 dB		
	INDENTATION - RESIDUAL	EN 433/EN ISO 24343-1		
		Pass ≤0.1mm		
	CASTOR CHAIR CONTINUOUS USE	EN 425/ISO 4918		
		Pass		
	THERMAL RESISTANCE	ISO 8302		
		0.0245 m <sup>2</sup> K/W Suitable for underfloor heating. Max 27°C		
	SLIP RESISTANCE**	BS 7976		
		Plank: Dry: 61 Wet: 33		
		Tile: Dry: 66 Wet: 29		
		R10		
		Plank: B Tile: A		
		DS		
		DIN 51130		
		DIN 51097		
		EN 13893		
	LIGHT REFLECTANCE VALUE (LRV)	BS 8493:2008+A1:2010		
		See separate table		
	VOC EMISSION	ISO 16000		
		Indoor Air Comfort Gold		
	ADHESIVE	Please install according to our installation instructions.		
	RECYCLING	Suitable		
	PHTHALATE FREE	Yes		

PRODUCT	LRV
LLPI42	26
LLPI43	20
LLPI44	34
LLPI45	27
LLPI46	27
LLPI47	38
LLPI48	21
LLPI49	46
LLPI50	25
LLPI51	9
LLT208	66
LLT209	44
LLT210	23
LLT211	10

\* Subject to terms. Please see our website.

\*\*Slip resistance is measured on ex-factory product. Slip resistance in use will be affected by surface contamination, use and how the product is maintained.

Manufactured to ISO 9001



CERTIFIED BY  
SCS Global Services



17

EN 14041:2004 (DOP 2017/PL/EN/01)
Notified body 0321 Flooring Coverings (Internal)
ISO 10874 Class 23/33/42 Manufactured to ISO 10582




# FIND US ONLINE

## palioflooring.com

The website offers a wealth of inspiration, including our installation videos which take you through a step by step guide to fitting all three of the Palio ranges with Roger Bisby from Skill Builder.

You can also view these on the Palio by Karndean YouTube channel.



**Palio Clic installation guide**  
The Palio Clic range is quick and easy to install with a patented and familiar click-locking mechanism that doesn't require adhesive – see how to install here.

**Palio Core installation guide**  
Palio Core offers a rigid core LVT construction which provides more robustness on uneven subfloors and is our most acoustically friendly Palio product – see how to install here.

**Palio LooseLay installation guide**  
Realistic wood and stone look designs, available in a loose lay format with a friction grip backing – see how to install here.

[View all support](#)

## FIND A STOCKIST

Simply log onto **palioflooring.com** where you can select a local stockist that has our Palio ranges in stock for you to pick up a sample or buy the product.

You can also contact our Trade team for more details about Palio by Karndean on **01386 820110** or for any technical questions you may have, contact our technical experts on **01386 820102**.



We provide a sample service so you can see and handle the planks and tiles that you are interested in.

To use our fast and convenient sample service call **01386 820110** or visit **palioflooring.com** to order a chip size sample.







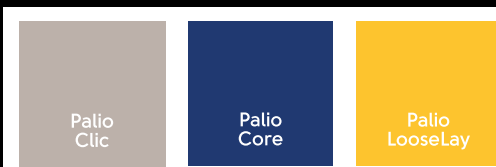
## CONTACT US...

Crab Apple Way  
Evesham  
Worcestershire  
WR11 1GP  
01386 820110  
[info@palioflooring.com](mailto:info@palioflooring.com)

[palioflooring.com](http://palioflooring.com)



Front cover: AREZZO CP4503 | RCP6503



PALBYKRNBR01 | KD4590UK 04/19